

Myosin Light Chain2

Rabbit Monoclonal antibody(Mab)

Catalog # AD80100

Product Information

Application	IHC-P
Primary Accession	P10916
Reactivity	Human
Host	Rabbit
Clonality	Monoclonal
Clone Names	198B6C1
Calculated MW	18789

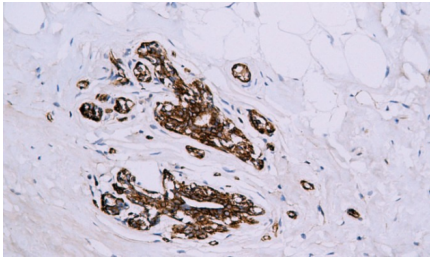
Additional Information

Gene ID	4633
Gene Name	MYL2 (HGNC:7583)
Other Names	Myosin regulatory light chain 2, ventricular/cardiac muscle isoform, MLC-2, Ventricular myosin light chain 2, MYL2 (HGNC:7583)
Dilution	IHC-P~~Ready-to-use
Storage	Maintain refrigerated at 2-8°C.
Precautions	Myosin Light Chain2 Antibody is for research use only and not for use in diagnostic or therapeutic procedures.

Protein Information

Name	MYL2 (HGNC:7583)
Function	Contractile protein that plays a role in heart development and function (PubMed: 23365102 , PubMed: 32453731). Following phosphorylation, plays a role in cross-bridge cycling kinetics and cardiac muscle contraction by increasing myosin lever arm stiffness and promoting myosin head diffusion; as a consequence of the increase in maximum contraction force and calcium sensitivity of contraction force. These events altogether slow down myosin kinetics and prolong duty cycle resulting in accumulated myosins being cooperatively recruited to actin binding sites to sustain thin filament activation as a means to fine-tune myofilament calcium sensitivity to force (By similarity). During cardiogenesis plays an early role in cardiac contractility by promoting cardiac myofibril assembly (By similarity).
Cellular Location	Cytoplasm, myofibril, sarcomere, A band {ECO:0000250 UniProtKB:P08733}
Tissue Location	Highly expressed in type I muscle fibers.

Images



正常乳腺

Please note: All products are 'FOR RESEARCH USE ONLY. NOT FOR USE IN DIAGNOSTIC OR THERAPEUTIC PROCEDURES'.