

Glucagon

Rabbit Monoclonal antibody(Mab)
Catalog # AD80078

Product Information

Application	IHC-P
Primary Accession	P01275
Reactivity	Human
Host	Rabbit
Clonality	Monoclonal
Clone Names	665B6H2
Calculated MW	20909

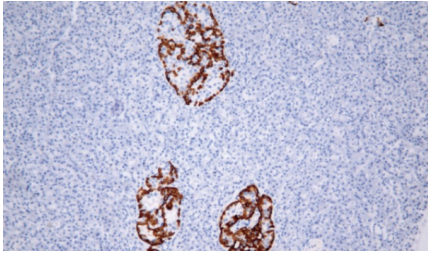
Additional Information

Gene ID	2641
Gene Name	GCG
Other Names	Pro-glucagon, Glicentin, Glicentin-related polypeptide, GRPP, Oxyntomodulin, OXM, OXY, Glucagon, Glucagon-like peptide 1, GLP-1, Incretin hormone, Glucagon-like peptide 1(7-37), GLP-1(7-37), Glucagon-like peptide 1(7-36), GLP-1(7-36), Glucagon-like peptide 2, GLP-2, GCG (HGNC:4191)
Dilution	IHC-P~~Ready-to-use
Storage	Maintain refrigerated at 2-8°C.
Precautions	Glucagon Antibody is for research use only and not for use in diagnostic or therapeutic procedures.

Protein Information

Name	GCG (HGNC:4191)
Function	[Glucagon]: Plays a key role in glucose metabolism and homeostasis. Regulates blood glucose by increasing gluconeogenesis and decreasing glycolysis. A counterregulatory hormone of insulin, raises plasma glucose levels in response to insulin-induced hypoglycemia. Plays an important role in initiating and maintaining hyperglycemic conditions in diabetes. Binds to and activates the glucagon receptor GCGR, which couples to the G(s) G protein and elevates intracellular cAMP, triggering downstream metabolic responses (PubMed: 32193322).
Cellular Location	Secreted.
Tissue Location	[Glucagon]: Secreted in the A cells of the islets of Langerhans. [Glucagon-like peptide 2]: Secreted from enteroendocrine cells throughout the gastrointestinal tract. Also secreted in selected neurons in the brain [Oxyntomodulin]: Secreted from enteroendocrine cells throughout the gastrointestinal tract

Images



胰腺

Please note: All products are 'FOR RESEARCH USE ONLY. NOT FOR USE IN DIAGNOSTIC OR THERAPEUTIC PROCEDURES'.