

# CK8

Mouse Monoclonal antibody(Mab)  
Catalog # AD80020

## Product Information

Application	IHC-P
Primary Accession	<a href="#">P05787</a>
Reactivity	Human
Host	Mouse
Clonality	Monoclonal
Clone Names	857D4C5
Calculated MW	53704

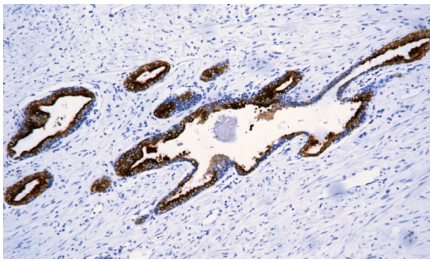
## Additional Information

Gene ID	3856
Gene Name	KRT8
Other Names	Keratin, type II cytoskeletal 8, Cytokeratin-8, CK-8, Keratin-8, K8, Type-II keratin Kb8, KRT8, CYK8
Dilution	IHC-P~~Ready-to-use
Storage	Maintain refrigerated at 2-8°C.
Precautions	CK8 Antibody is for research use only and not for use in diagnostic or therapeutic procedures.

## Protein Information

Name	KRT8
Synonyms	CYK8
Function	Required for the formation of KRT8/KRT18 filaments that are involved in ARHGEF40-mediated actin stress fiber formation and tensional force-induced stress fiber formation and reinforcement (PubMed: <a href="#">26823019</a> ). Together with KRT19, helps to link the contractile apparatus to dystrophin at the costameres of striated muscle.
Cellular Location	Cytoplasm. Nucleus, nucleoplasm {ECO:0000250 UniProtKB:Q10758}.
Tissue Location	Nucleus matrix {ECO:0000250 UniProtKB:Q10758}. Cytoplasm, cytoskeleton Observed in muscle fibers accumulating in the costameres of myoplasm at the sarcolemma membrane in structures that contain dystrophin and spectrin. Expressed in gingival mucosa and hard palate of the oral cavity.

## Images



Please note: All products are 'FOR RESEARCH USE ONLY. NOT FOR USE IN DIAGNOSTIC OR THERAPEUTIC PROCEDURES'.