

bcl-2 Antibody

Mouse Monoclonal Antibody (Mab)
Catalog # AD80002

Product Information

Application	IHC
Primary Accession	Q92934
Reactivity	Human
Host	Mouse
Clonality	Monoclonal
Isotype	IgG1
Clone Names	923F8A7

Additional Information

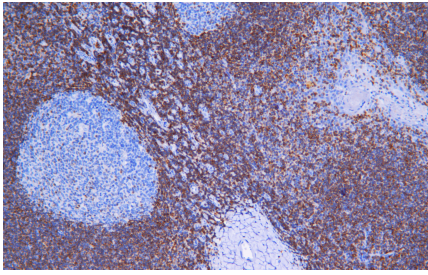
Gene ID	572
Gene Name	BAD
Other Names	Bcl2-associated agonist of cell death, BAD, Bcl-2-binding component 6, Bcl-2-like protein 8, Bcl2-L-8, Bcl-xL/Bcl-2-associated death promoter, Bcl2 antagonist of cell death, BAD, BBC6, BCL2L8
Dilution	IHC~~Ready-to-use
Storage	Maintain refrigerated at 2-8°C.
Precautions	bcl-2 Antibody is for research use only and not for use in diagnostic or therapeutic procedures.

Protein Information

Synonyms	BBC6, BCL2L8
Function	Promotes cell death. Successfully competes for the binding to Bcl-X(L), Bcl-2 and Bcl-W, thereby affecting the level of heterodimerization of these proteins with BAX. Can reverse the death repressor activity of Bcl-X(L), but not that of Bcl-2 (By similarity). Appears to act as a link between growth factor receptor signaling and the apoptotic pathways.
Cellular Location	Mitochondrion outer membrane. Cytoplasm {ECO:0000250 UniProtKB:Q61337}. Note=Colocalizes with HIF3A in the cytoplasm (By similarity). Upon phosphorylation, locates to the cytoplasm. {ECO:0000250 UniProtKB:Q61337}
Tissue Location	Expressed in a wide variety of tissues.

Images

Immunohistochemical analysis of paraffin-embedded human tonsil tissue using AD80002 performed on the



Abcarta® FAIP-48 Fully automated IHC platform. Tissue was fixed with formaldehyde at room temperature, antigen retrieval was by heat mediation with a EDTA buffer (pH9. 0). Samples were incubated with primary antibody(Ready-to-use) for 15 min at room temperature. AmpSee™ Detection Systems(Abcepta:ADR005) was used as the secondary antibody.

Please note: All products are 'FOR RESEARCH USE ONLY. NOT FOR USE IN DIAGNOSTIC OR THERAPEUTIC PROCEDURES'.