

# Phospho-Cdc25B (Ser323) Antibody

Catalog # ABV11989

## Product Information

---

Application	WB, E
Primary Accession	<a href="#">P30305</a>
Reactivity	Human, Mouse, Rat
Host	Rabbit
Isotype	Rabbit IgG
Calculated MW	64987

## Additional Information

---

Gene ID	994
Positive Control	WB: VEC, 293 and A549 cell lysates
Application & Usage	WB 1:500-1:2000; E 1:20000
Other Names	M-phase inducer phosphatase 2, Dual specificity phosphatase Cdc25B, CDC25B, CDC25HU2
Target/Specificity	CDC25B
Antibody Form	Liquid
Appearance	Colorless liquid
Handling	The antibody solution should be gently mixed before use
Reconstitution & Storage	-20°C
Background Descriptions	
Precautions	Phospho-Cdc25B (Ser323) Antibody is for research use only and not for use in diagnostic or therapeutic procedures.

## Protein Information

---

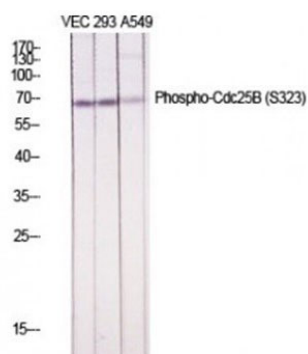
Name	CDC25B
Synonyms	CDC25HU2
Function	Tyrosine protein phosphatase which functions as a dosage- dependent inducer of mitotic progression (PubMed: <a href="#">1836978</a> , PubMed: <a href="#">20360007</a> ). Directly dephosphorylates CDK1 and stimulates its kinase activity (PubMed: <a href="#">20360007</a> ). Required for G2/M phases of the cell cycle progression and abscission during cytokinesis in a ECT2-dependent manner (PubMed: <a href="#">17332740</a> ). The three isoforms seem to have a different level of activity (PubMed: <a href="#">1836978</a> ).

## Cellular Location

Cytoplasm, cytoskeleton, microtubule organizing center, centrosome.  
Cytoplasm, cytoskeleton, spindle pole

## Images

---



WB (WB) analysis using Phospho.Cdc25B (S323)  
Polyclonal Antibody in VEC, 293 and A549 cell lysates

Please note: All products are 'FOR RESEARCH USE ONLY. NOT FOR USE IN DIAGNOSTIC OR THERAPEUTIC PROCEDURES'.