

Phospho-Cdc25A (Ser75) Antibody

Catalog # ABV11988

Product Information

Application	WB, IHC, E
Primary Accession	P30304
Reactivity	Human, Mouse, Rat
Host	Rabbit
Isotype	Rabbit IgG
Calculated MW	59087

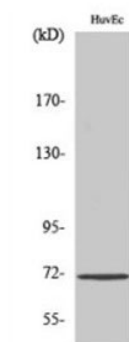
Additional Information

Gene ID	993
Positive Control	WB: HuvEc cell lysate
Application & Usage	WB 1:500-1:2000; IHC 1:100-1:300; E 1:5000
Other Names	M-phase inducer phosphatase 1, Dual specificity phosphatase Cdc25A, CDC25A
Target/Specificity	CDC25A
Antibody Form	Liquid
Appearance	Colorless liquid
Handling	The antibody solution should be gently mixed before use
Reconstitution & Storage	-20°C
Background Descriptions	
Precautions	Phospho-Cdc25A (Ser75) Antibody is for research use only and not for use in diagnostic or therapeutic procedures.

Protein Information

Name	CDC25A
Function	Tyrosine protein phosphatase which functions as a dosage- dependent inducer of mitotic progression (PubMed: 12676925 , PubMed: 14559997 , PubMed: 1836978 , PubMed: 20360007). Directly dephosphorylates CDK1 and stimulates its kinase activity (PubMed: 20360007). Also dephosphorylates CDK2 in complex with cyclin-E, in vitro (PubMed: 20360007).

Images



WB (WB) analysis of HuvEc cells using Phospho-Cdc25A (S7S) Polyclonal Antibody.

Please note: All products are 'FOR RESEARCH USE ONLY. NOT FOR USE IN DIAGNOSTIC OR THERAPEUTIC PROCEDURES'.