

Phospho GAP43 (Ser41) Antibody

Catalog # ABV11951

Product Information

Application	WB, IHC
Primary Accession	P17677
Reactivity	Human, Mouse, Rat
Host	Rabbit
Isotype	Rabbit IgG
Calculated MW	24803

Additional Information

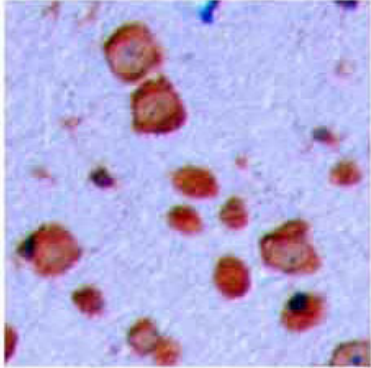
Gene ID	2596
Positive Control	WB; HeLa, mouse brain, rat brain lysates, IHC; human brain tissues
Application & Usage	WB; 1:500 – 1:2000, IH; 1:100 – 1:200, IF/IC; 1:100 – 1:500
Other Names	Neuromodulin; Axonal membrane protein GAP-43; Growth-associated protein 43; Neural phosphoprotein B-50; pp46
Target/Specificity	GAP43
Antibody Form	Liquid
Appearance	Colorless liquid
Handling	The antibody solution should be gently mixed before use
Reconstitution & Storage	-20°C
Background Descriptions	
Precautions	Phospho GAP43 (Ser41) Antibody is for research use only and not for use in diagnostic or therapeutic procedures.

Protein Information

Name	GAP43
Function	This protein is associated with nerve growth. It is a major component of the motile 'growth cones' that form the tips of elongating axons. Plays a role in axonal and dendritic filopodia induction.
Cellular Location	Cell membrane; Peripheral membrane protein; Cytoplasmic side. Cell projection, growth cone membrane; Peripheral membrane protein; Cytoplasmic side. Synapse Cell projection, filopodium membrane; Peripheral membrane protein. Perikaryon {ECO:0000250 UniProtKB:P07936}. Cell projection, dendrite {ECO:0000250 UniProtKB:P07936}. Cell projection, axon

{ECO:0000250|UniProtKB:P07936}. Cytoplasm
{ECO:0000250|UniProtKB:P07936}. Note=Cytoplasmic surface of growth cone and synaptic plasma membranes.

Images



Immunohistochemical analysis of GAP43 staining in human brain formalin fixed paraffin embedded tissue section.



Immunofluorescent analysis of GAP43 staining in HeLa cells

Please note: All products are 'FOR RESEARCH USE ONLY. NOT FOR USE IN DIAGNOSTIC OR THERAPEUTIC PROCEDURES'.