

# Anti-ZP2 Antibody

Catalog # ABV11927

## Product Information

---

<b>Application</b>	WB, IHC
<b>Primary Accession</b>	<a href="#">Q05996</a>
<b>Reactivity</b>	Human, Mouse, Rat
<b>Host</b>	Rabbit
<b>Isotype</b>	Rabbit IgG
<b>Calculated MW</b>	82357

## Additional Information

---

<b>Gene ID</b>	7783
<b>Positive Control</b>	WB: MCF7, HeLa, RAW264.7, H9C2; IHC: human brain tissue
<b>Application &amp; Usage</b>	WB; 1:500 – 1:2000, IHC; 1:50 – 1:200
<b>Other Names</b>	ZPA, Zona pellucida sperm-binding protein 2, Zona pellucida glycoprotein 2, Zp-2, Zona pellucida protein A
<b>Target/Specificity</b>	ZP2
<b>Antibody Form</b>	Liquid
<b>Appearance</b>	Colorless liquid
<b>Handling</b>	The antibody solution should be gently mixed before use
<b>Reconstitution &amp; Storage</b>	-20°C
<b>Background Descriptions</b>	
<b>Precautions</b>	Anti-ZP2 Antibody is for research use only and not for use in diagnostic or therapeutic procedures.

## Protein Information

---

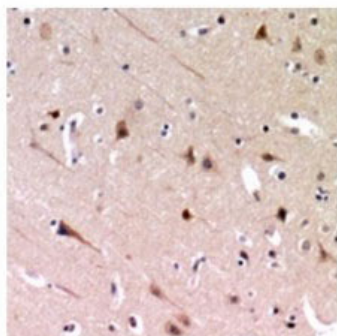
<b>Name</b>	ZP2
<b>Synonyms</b>	ZPA
<b>Function</b>	Component of the zona pellucida, an extracellular matrix surrounding oocytes which mediates sperm binding, induction of the acrosome reaction and prevents post-fertilization polyspermy (PubMed: <a href="#">29895852</a> ). The zona pellucida is composed of 3 to 4 glycoproteins, ZP1, ZP2, ZP3, and ZP4. ZP2 may act as a secondary sperm receptor (PubMed: <a href="#">29895852</a> ).
<b>Cellular Location</b>	[Processed zona pellucida sperm-binding protein 2]: Zona pellucida

## Tissue Location

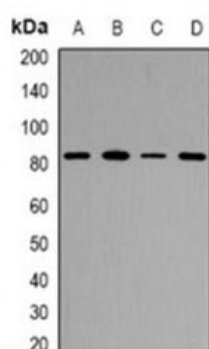
Expressed in oocytes(at protein level).

## Images

---



Immunohistochemical analysis of ZP2 staining in human brain formalin fixed paraffin embedded tissue section.



WB analysis of ZP2 expression in MCF7 (A), HeLa (B), RAW264.7 (C), H9C2 (D) whole cell lysates.

Please note: All products are 'FOR RESEARCH USE ONLY. NOT FOR USE IN DIAGNOSTIC OR THERAPEUTIC PROCEDURES'.