

Anti-ZNT2 Antibody

Catalog # ABV11926

Product Information

Application	WB, IHC
Primary Accession	Q9BRI3
Reactivity	Human, Mouse, Rat
Host	Rabbit
Isotype	Rabbit IgG
Calculated MW	35178 Da

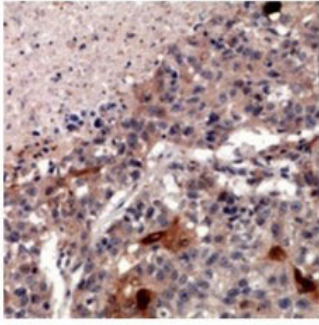
Additional Information

Positive Control	WB: HeLa, RAW264.7, PC12 cell lystae; IHC: human lung cancer
Application & Usage	WB; 1:500 – 1:2000, IHC; 1:50 – 1:200
Other Names	ZNT2, Zinc transporter 2, ZnT-2, Solute carrier family 30 member 2
Target/Specificity	SLC30A2
Antibody Form	Liquid
Appearance	Colorless liquid
Handling	The antibody solution should be gently mixed before use
Reconstitution & Storage	-20°C
Background Descriptions	
Precautions	Anti-ZNT2 Antibody is for research use only and not for use in diagnostic or therapeutic procedures.

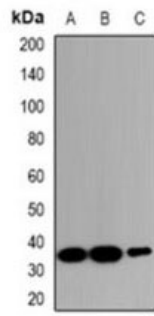
Protein Information

Images

Immunohistochemical analysis of ZNT2 staining in human lung cancer formalin fixed paraffin embedded tissue section.



WB analysis of ZNT2 expression in HeLa (A); RAW264.7 (B); PC12 (C) whole cell lysates.



Please note: All products are 'FOR RESEARCH USE ONLY. NOT FOR USE IN DIAGNOSTIC OR THERAPEUTIC PROCEDURES'.