

Anti-RAB24 Antibody

Rabbit Polyclonal antibody
Catalog # ABV11878

Product Information

Application	WB, IHC
Primary Accession	Q969Q5
Reactivity	Human, Mouse, Rat
Host	Rabbit
Clonality	Polyclonal
Isotype	Rabbit IgG
Calculated MW	23124

Additional Information

Gene ID	53917
Positive Control	WB: HeLa, RAW264.7, H92 cell lysates; IHC: human breast cancer tissue
Application & Usage	WB; 1:500 – 1:2000, IHC; 1:50 – 1:200
Alias Symbol	RAB24
Other Names	Ras-related protein Rab-24
Formulation	In 0.42% Potassium phosphate; 0.87% Sodium chloride; pH 7.3; 30% glycerol and 0.01% sodium azide
Reconstitution & Storage	12 months under -20°C
Background Descriptions	
Precautions	Anti-RAB24 Antibody is for research use only and not for use in diagnostic or therapeutic procedures.

Protein Information

Name	RAB24 (HGNC:9765)
Function	The small GTPases Rab are key regulators of intracellular membrane trafficking, from the formation of transport vesicles to their fusion with membranes. Rabs cycle between an inactive GDP-bound form and an active GTP-bound form that is able to recruit to membranes different sets of downstream effectors directly responsible for vesicle formation, movement, tethering and fusion. RAB24 is an atypical RAB protein that presents low GTPase activity and thereby exists predominantly in the GTP-bound active state. RAB24 is required for the clearance of late autophagic vacuoles under basal conditions. It is not needed for starvation-induced autophagy. Involved in the modulation of meiotic apparatus assembly and meiotic progression during oocyte maturation, possibly through regulation of

kinetochore-microtubule interaction.

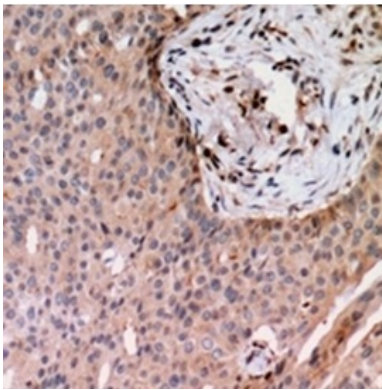
Cellular Location

Cytoplasm, cytosol. Membrane; Lipid-anchor Cytoplasmic vesicle, autophagosome membrane {ECO:0000250|UniProtKB:P35290}. Cytoplasm, perinuclear region {ECO:0000250|UniProtKB:P35290}. Cytoplasm, cytoskeleton, spindle {ECO:0000250|UniProtKB:P35290}. Note=Only about 20% is recovered in the particulate fraction (PubMed:10660536). RAB24 localizes in perinuclear region and in the limiting membranes of autophagic compartments under basal conditions. RAB24 is localized in the cytoplasm with an accumulated distribution in nuclear region at germinal vesicle (GV) stage of oocyte meiotic progression. At pre-metaphase I stage, localized in the cytoplasm with a particular concentration around chromosomes. As the oocytes enter metaphase I, located to the spindle region. Similar distribution pattern is observed in MII oocytes (By similarity). {ECO:0000250|UniProtKB:P35290, ECO:0000269|PubMed:10660536}

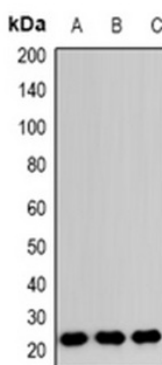
Background

RAB24 is a small GTPase of the Rab subfamily of Ras-related proteins that regulate intracellular protein trafficking. May be involved in autophagy-related processes

Images



Immunohistochemical analysis of RAB24 staining in human breast cancer formalin fixed paraffin embedded tissue section.



Western blot analysis of RAB24 expression in HeLa(A), RAW264.7(B), H9C2(C) whole cell lysates.

Please note: All products are 'FOR RESEARCH USE ONLY. NOT FOR USE IN DIAGNOSTIC OR THERAPEUTIC PROCEDURES'.