

# Alpha 2 HS Glycoprotein Antibody

Rabbit Polyclonal Antibody

Catalog # ABV11805

## Product Information

---

<b>Application</b>	WB
<b>Primary Accession</b>	<a href="#">P02765</a>
<b>Reactivity</b>	Human
<b>Host</b>	Rabbit
<b>Clonality</b>	Polyclonal
<b>Isotype</b>	Rabbit IgG
<b>Calculated MW</b>	39341

## Additional Information

---

<b>Gene ID</b>	197
<b>Positive Control</b>	WB: h serum, h alpha 2 HS Glycoprotein
<b>Application &amp; Usage</b>	WB: 1-4 $\mu$ g
<b>Alias Symbol</b>	AHSG
<b>Other Names</b>	Alpha-2-Z-globulin, Ba-alpha-2-glycoprotein, Fetuin-A
<b>Appearance</b>	Colorless liquid
<b>Formulation</b>	In PBS pH 7.2, 0.01 % BSA, 0.03 % ProClin® and 50 % glycerol
<b>Reconstitution &amp; Storage</b>	-20 °C
<b>Background Descriptions</b>	
<b>Precautions</b>	Alpha 2 HS Glycoprotein Antibody is for research use only and not for use in diagnostic or therapeutic procedures.

## Protein Information

---

<b>Name</b>	AHSG
<b>Synonyms</b>	FETUA
<b>Function</b>	Promotes endocytosis, possesses opsonic properties and influences the mineral phase of bone. Shows affinity for calcium and barium ions.
<b>Cellular Location</b>	Secreted.
<b>Tissue Location</b>	Synthesized in liver and selectively concentrated in bone matrix. Secreted in plasma. It is also found in dentin in much higher quantities than other plasma proteins

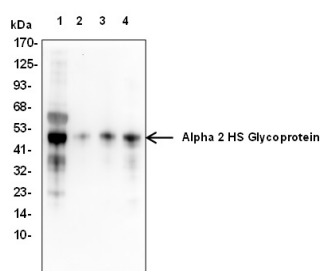
## Background

---

Alpha 2 macroglobulin (A2M) is a major serum protein found at concentrations of 240 mg per 100 ml in men and 290 mg per 100 ml in women. It functions as a broad-spectrum protease-binding protein. It is produced by the liver, and is a major component of the alpha-2 band in protein electrophoresis. It is a large plasma glycoprotein that has long been known as an irreversible inhibitor of a variety of proteinases. More recently, it has been reported that numerous growth factors, cytokines and hormones bind to alpha 2M through diverse mechanisms. A2M is also produced in the brain where it binds multiple extracellular ligands and is internalized by neurons and astrocytes. In the brain of Alzheimer's disease (AD) patients, A2M has been localized to diffuse amyloid plaques. A2M also binds soluble beta-amyloid, of which it mediates degradation. Protease-conjugated alpha2-macroglobulin is selectively bound by cells contacting the body fluids and alpha2-macroglobulin and its protease cargo are then internalized and degraded in secondary lysosomes of those cells.

## Images

---



Please note: All products are 'FOR RESEARCH USE ONLY. NOT FOR USE IN DIAGNOSTIC OR THERAPEUTIC PROCEDURES'.